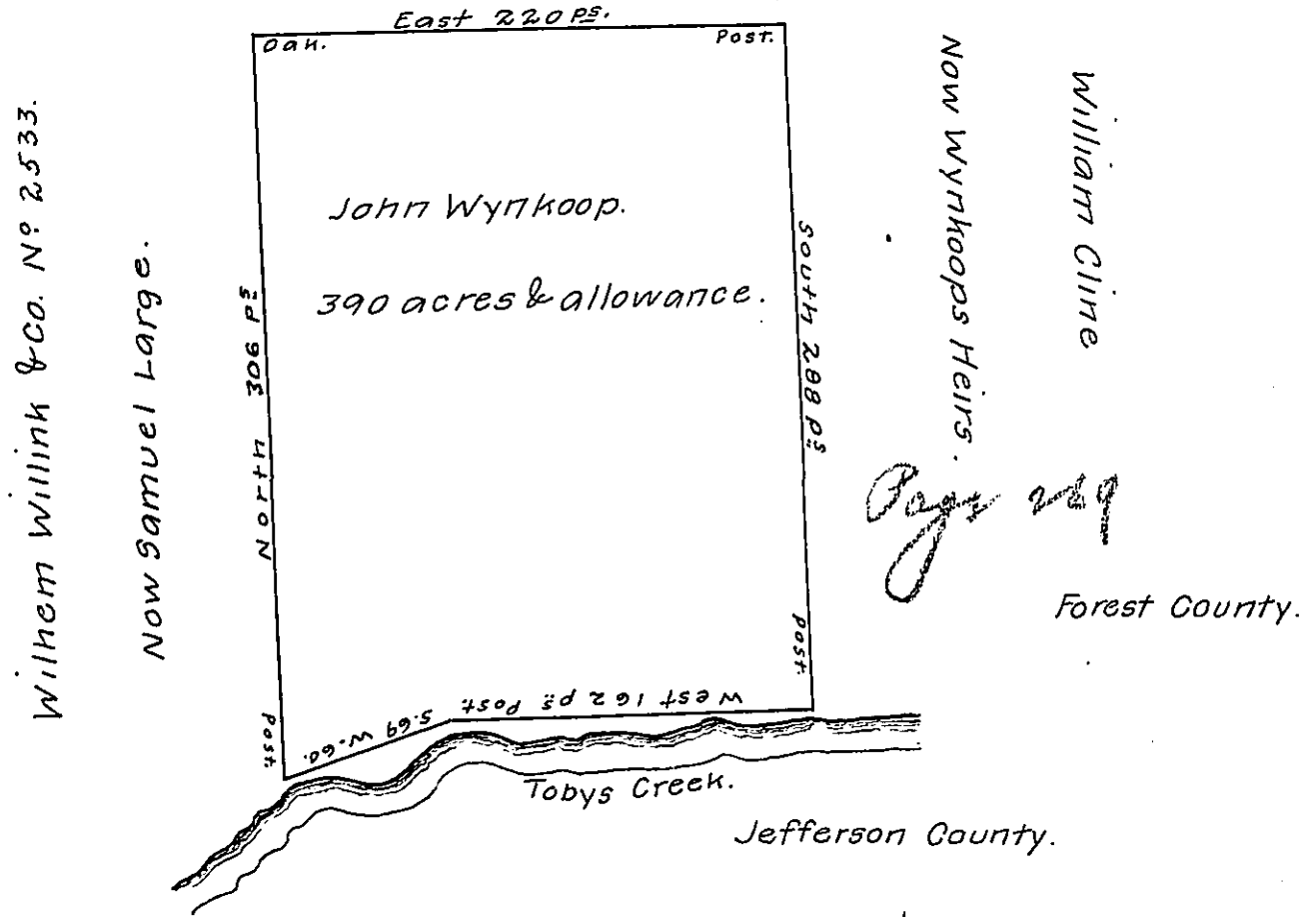


Wilhem Willink N° 2548
Now Samuel Large.



A draft of a tract of land situate in Millstone township
Forrest County, (formerly Barnet-township Jefferson County) Con-
taining Three hundred and ninety Acres and the allowance of six
per cent for roads &c. Surveyed the 29th day of August 1861. in pur-
suance of a Warrant granted to John Wynkoop dated the 8th day of
April A.D. 1840.

John Gilsoyl.

To Henry Souther Esq.

County Surveyor.

Surveyor General.

IN TESTIMONY that the above is a copy of the original remaining on file in
the Department of Internal Affairs of Pennsylvania, made
conformably to an Act of Assembly approved the 16th day of
February, 1833, I have hereunto set my Hand and caused
the Seal of said Department to be affixed at Harrisburg,
this nineteenth day of June, 1907.

Henry Howard
Secretary of Internal Affairs.